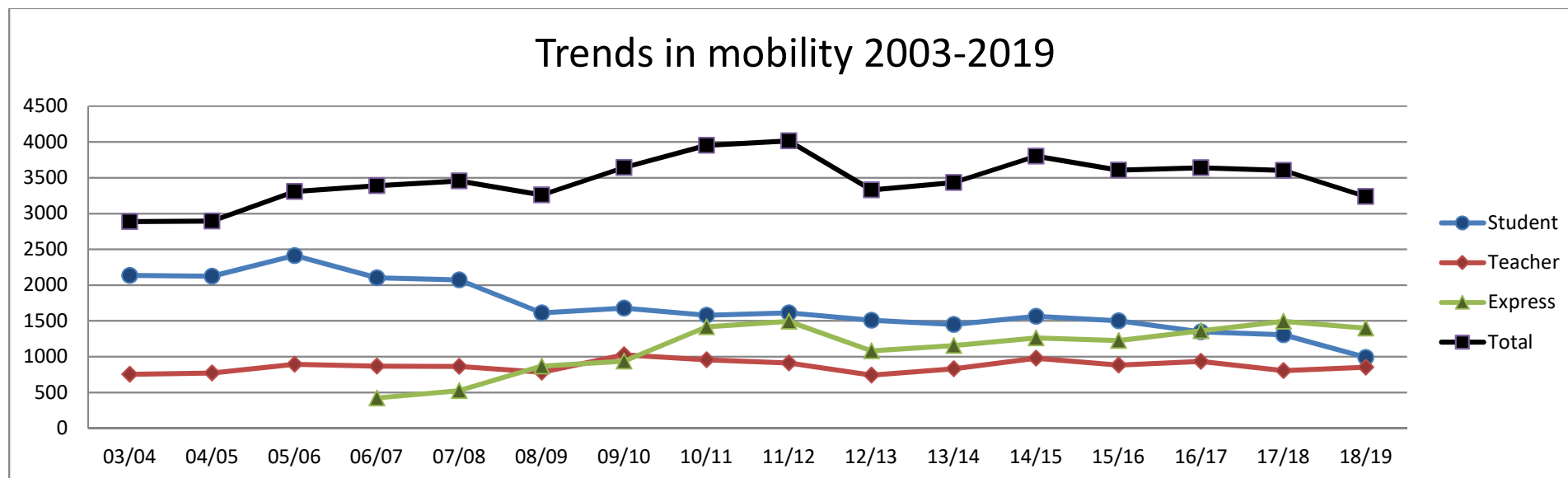
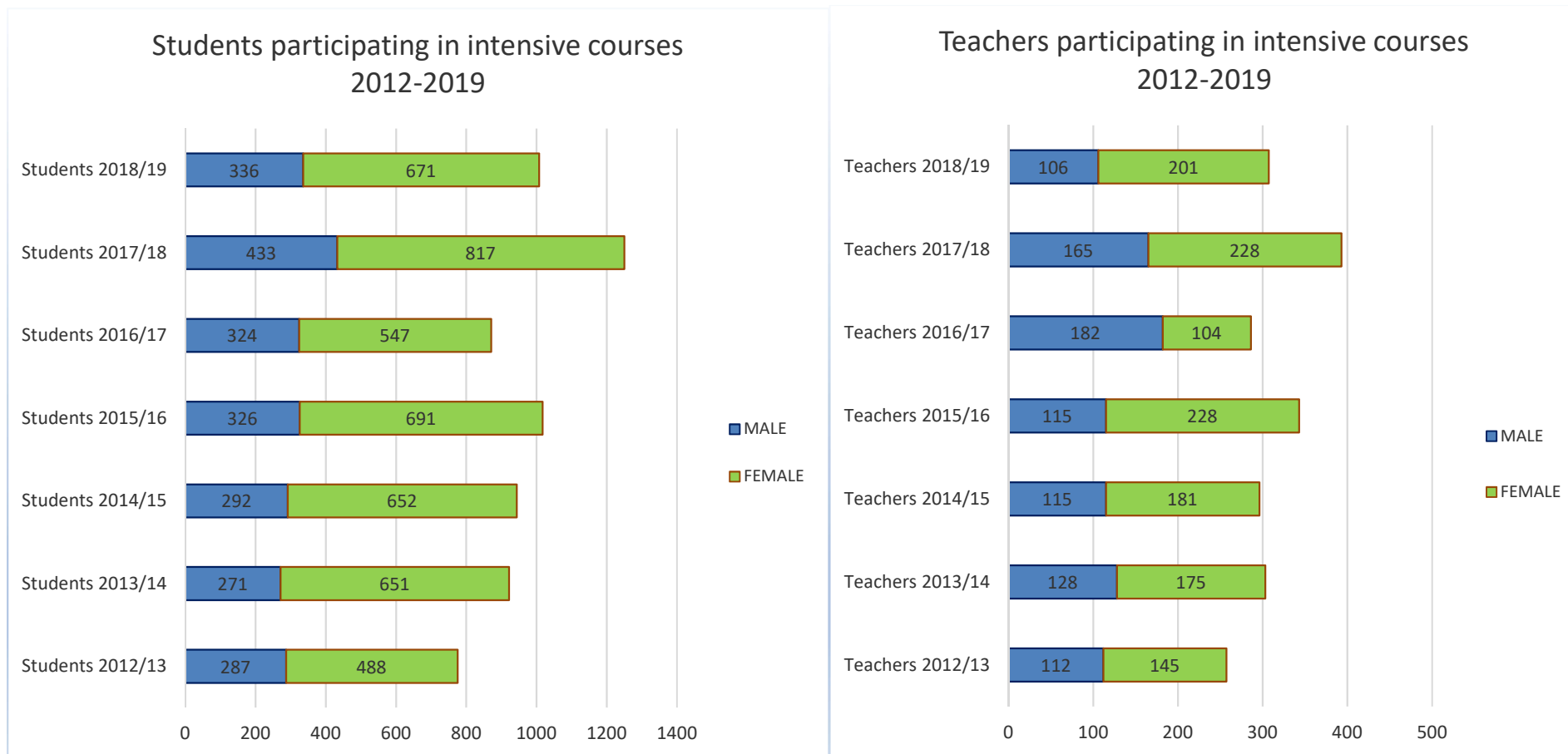


Reported statistics of Nordplus Higher Education 2018 grants (academic year 2018/19)



Participation in Nordplus intensive courses in 2012-2019



*The tables include also domestic mobility.

Student mobility in 2018/19 – long term (3-12 months)

To →	DK	EE	FI	FO	GL	IS	LV	LT	NO	SE	AX	Total from:
From ↓												
DK		0	29	5	9	22	0	0	64	49	0	178
EE	0		1	0	0	0	0	0	0	1	0	2
FI	44	1		0	0	25	1	0	75	153	1	300
FO	0	0	0		11	7	0	0	1	0	0	19
GL	10	0	0	2		1	0	0	0	0	0	13
IS	5	0	1	1	0		0	0	1	13	0	21
LV	0	0	0	0	0	0		0	0	0	0	0
LT	0	0	0	0	0	1	0		0	1	0	2
NO	56	1	6	0	1	11	0	0		21	0	96
SE	34	3	16	0	0	21	1	0	34		0	109
AX	0	0	0	0	0	0	0	0	0	0		0
Total to:	149	5	53	8	21	88	2	0	175	238	1	740

Student mobility in 2018/19 – short term (1-2 months)

To → From ↓	DK	EE	FI	FO	GL	IS	LV	LT	NO	SE	AX	Total from:
DK		0	1	22	22	7	0	1	15	5	0	73
EE	0		1	0	0	5	0	0	0	0	0	6
FI	5	1		0	0	1	1	2	15	33	1	59
FO	0	0	0		2	1	0	0	0	0	0	3
GL	0	0	0	0		0	0	0	0	0	0	0
IS	2	1	0	0	0		0	0	3	5	0	11
LV	0	0	0	0	0	1		0	0	1	0	2
LT	2	0	0	0	0	1	1		0	0	0	4
NO	30	0	3	1	0	7	0	0		6	0	47
SE	7	0	12	1	0	3	0	1	13		1	38
AX	0	0	2	0	0	0	0	0	0	4		6
Total to:	46	2	19	24	24	26	2	4	46	54	2	249

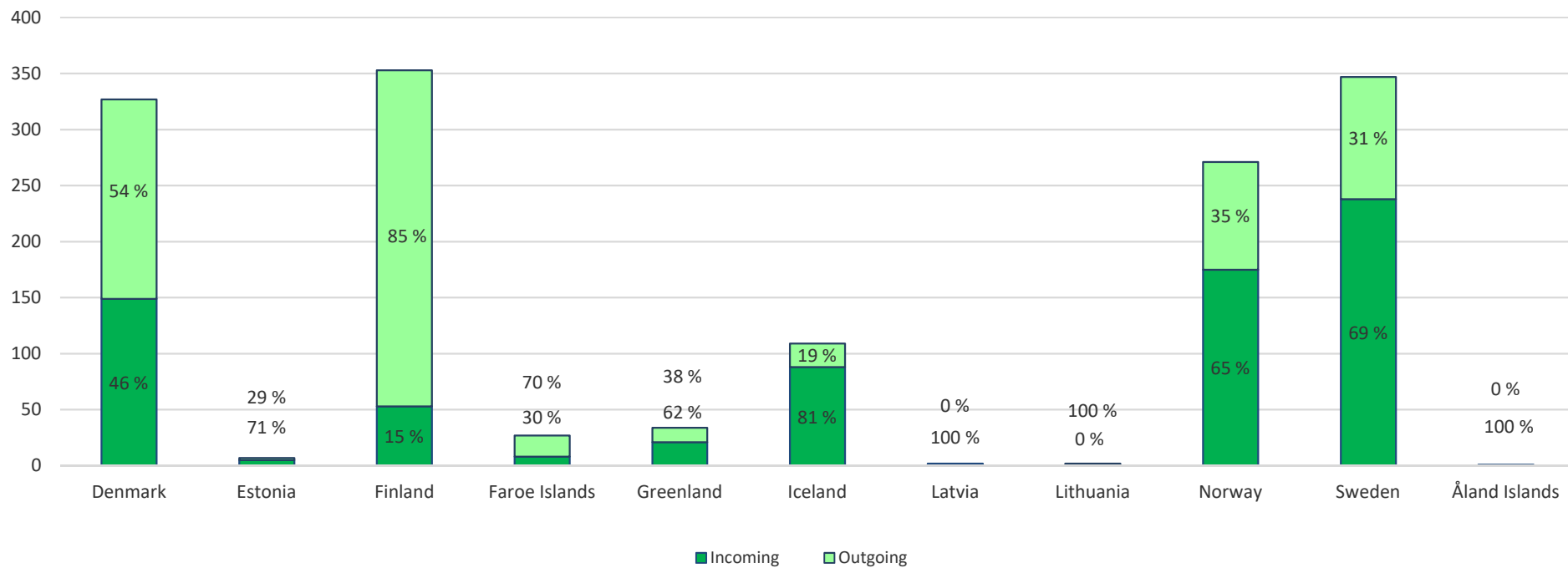
Express mobility in 2018/19 (< 1 month)

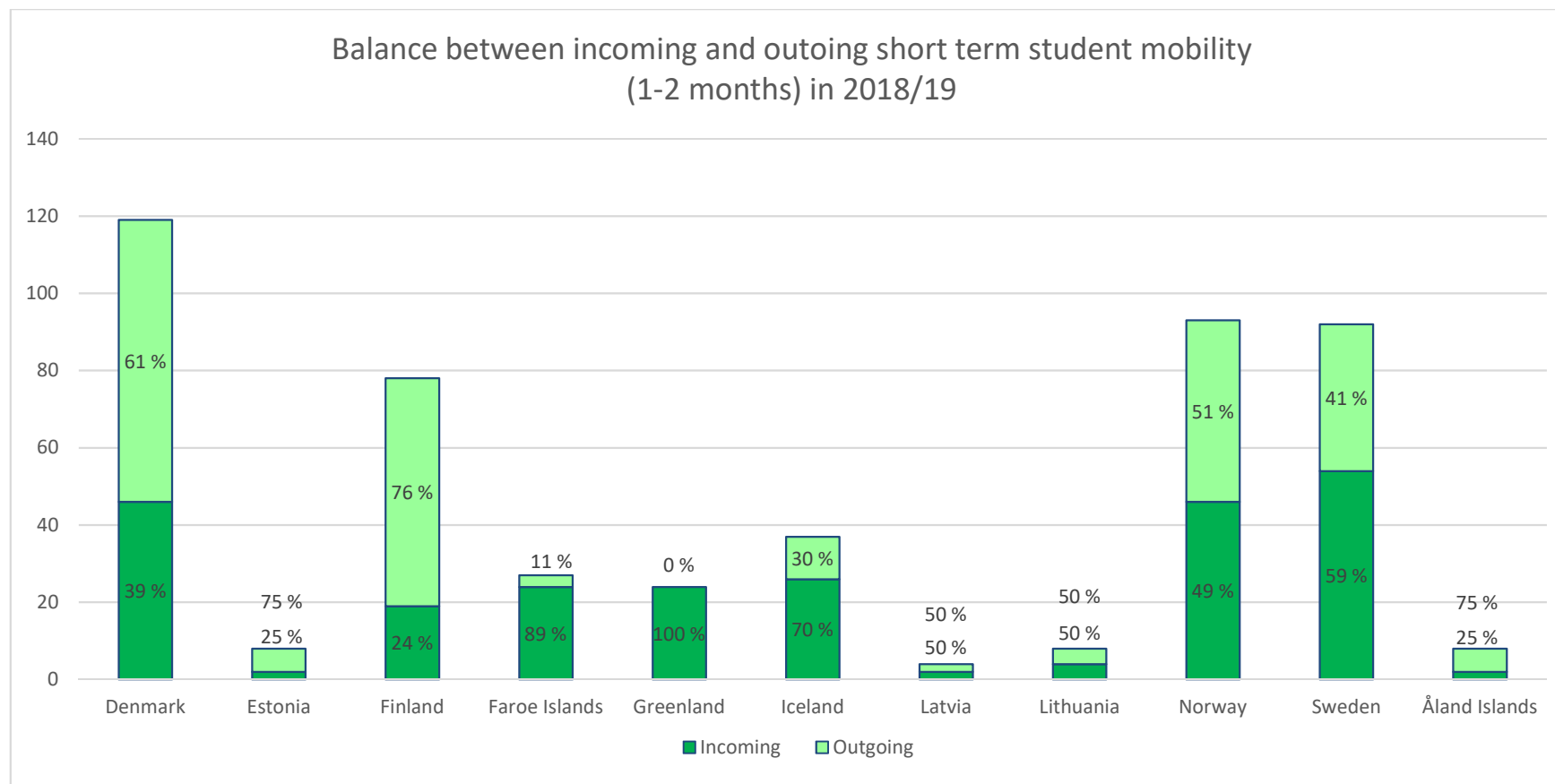
To →	DK	EE	FI	FO	GL	IS	LV	LT	NO	SE	AX	Total from:
From ↓												
DK		8	20	5	57	12	8	16	49	30	2	207
EE	19		46	0	0	2	41	42	5	31	7	193
FI	17	44		0	2	11	31	13	49	63	16	246
FO	1	0	0		0	1	0	0	3	0	0	5
GL	0	0	0	0		0	0	0	1	0	0	1
IS	23	1	8	0	0		3	0	11	22	0	68
LV	8	35	5	0	0	12		36	8	11	0	115
LT	9	57	13	0	0	3	28		12	21	0	143
NO	45	6	18	1	0	46	0	28		42	0	186
SE	54	28	55	0	3	28	2	29	33		1	233
AX	0	0	0	0	0	0	0	0	0	0		0
Total to:	176	179	165	6	62	115	113	164	171	220	26	1397

Teacher mobility in 2018/19

To →	DK	EE	FI	FO	GL	IS	LV	LT	NO	SE	AX	Total from:
From ↓												
DK		9	24	5	9	13	3	0	22	23	0	108
EE	9		20	0	0	8	27	14	6	26	1	111
FI	11	33		0	1	14	16	7	26	51	2	161
FO	1	1	0		0	0	0	0	0	3	0	5
GL	3	1	1	2		0	0	0	1	0	0	8
IS	6	6	7	4	0		4	0	2	12	0	41
LV	1	32	10	0	0	4		21	6	10	0	84
LT	5	16	14	0	1	6	25		13	3	0	83
NO	16	9	15	2	0	13	6	7		36	0	104
SE	20	25	38	7	0	8	4	8	34		1	145
AX	0	0	0	0	0	0	0	0	0	3		3
Total to:	72	132	129	20	11	66	85	57	110	167	4	853

Balance between incoming and outgoing long term student mobility
(3-12 months) in 2018/19





Balance between incoming and outgoing express mobility (< 1 month student mobility) in 2018/19

