



FINNISH NATIONAL
AGENCY FOR EDUCATION

Welcome to the webinar

Please keep your camera and microphone muted unless you are speaking.

Questions and comments can be posted in the chat.

We will reserve time at the end of the meeting to go through questions, you can then also ask for the floor by "raising your hand" or by commenting in the chat.

The presentations will be recorded and published after the meeting on our web page.





FINNISH NATIONAL
AGENCY FOR EDUCATION

Team Finland Knowledge (TFK) webinars with a focus on Southern Africa and Latin America

TFK-webinars per target area, 2022 application round
9-10.2.2022



TFK Programme for HE education cooperation



MAIN TARGET AREAS 2022:

**Southern Africa &
Latin America**

+ China, India, Russia &
Southeast Asia



PROJECT LENGTH:

2,5years

MAX. SUPPORT:

80 000€



FORMS OF COOPERATION:

Joint study units & courses

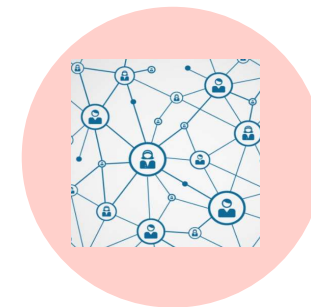
Digital/virtual teaching

Curriculum cooperation

Joint/double degrees

Mobility of students & staff

Working life cooperation



Learn more about

**Team Finland Knowledge
-network:**

minedu.fi/tfkverkosto

Eligible countries in Southern Africa

- Angola
- Botswana
- Southern Africa
- Democratic Republic of the Congo
- Lesotho
- Malawi
- Mauritius
- Mozambique
- Namibia
- Zambia
- Seychelles
- Eswatini
- Tanzania
- Zimbabwe
- Madagascar
- Ruanda
- Burundi

Eligible countries in Latin America

- Argentina
- Belize
- Bolivia
- Brazil
- Chile
- Columbia
- Costa Rica
- Ecuador
- El Salvador
- French Guayana
- Guatemala
- Guyana
- Honduras
- Mexico
- Nicaragua
- Panama
- Paraguay
- Peru
- Suriname
- Uruguay
- Venezuela

Questions sent in advance

- *I would like to ask about the point 4.2. regarding evaluation criteria. What does it mean the balance between the target regions regarding the total amount of funding to be granted overall? What are the implications or the balance in case there is just one partner country with several HEIs?*
 - In distributing the overall funding we will make sure that funding will be allocated to all the regions in the call, provided that there are enough projects with sufficient quality.
 - Implications only on call level.
 - A single project should have at least one HEI from Finland and one HEI from an eligible target country but can also have several.

Questions sent in advance

- *How does it work the application for special needs and inclusion grant? I mean can it be apply whenever? or has to be done at the same time that this application?*
 - Projects that are selected for funding can apply for a special needs grant for their students or staff with a disability.
 - Special needs grants have a rolling deadline.
- *Is it allowed to buy for example Lab or simulation equipment with the project grand?*
 - No, but the **purchase of services** and the **renting of equipment** are eligible organisational costs (max. 50% of the project funding).

TFK webinars per target area

Wed. 9.2. at 15-17 **Southern Africa**

- TFK Specialist Iina Soiri

Thu. 10.2. at 14-16 **Latin America**

- TFK Specialist Emilia Ahvenjärvi

- Materials will be published at
<https://www.oph.fi/en/programmes/tfk-programme#anchor-how-to-apply>



FINNISH NATIONAL
AGENCY FOR EDUCATION

Thank you!

With further questions please contact:

TFK-programme@oph.fi

Further information is available at:

<https://www.oph.fi/en/programmes/tfk-programme>

