

Project Sauna

Blazing the icy trail

Improving the Social integration
of international students

At
The University of Lapland

Format of presentation

- ◉ Who am i?
- ◉ The origin of the project
- ◉ Analysis
- ◉ Feedback
- ◉ The project itself
- ◉ Response
- ◉ The Future

Who am I?

- Teifion Powell
 - > British citizen (Please no brexit jokes)
 - > Studying Media Education
 - > The University of Lapland
- How did I come to lead the project?

The beginning

- Main meetings and stakeholders
 - Students
 - Teachers
 - Tuudo
 - LYY (Lapin yliopiston ylioppilaskunta)
 - ESN
 - Internationalisation office
 - Communication office

Self analysis

STRENGTHS

- Attractive location
- Active participation with ESN and Erasmus students
- Small University (Easier to make changes and see the impact)
- Wide variety of international lecturers

S

WEAKNESSES

- Finances
- Cross integration of international and Finnish students
- Lack of staff to focus primarily on project

W

OPPORTUNITIES

- Recent changes to International student orientation invites new steps to be taken
- Rotation of students on a regular basis allows the university to see what works and what does not
- Changing of staff at ESN and LYY allow implementation of new processes

O

THREATS

- Cultural differences
- Personal differences
- The limitations of such a project

T

Statistical analysis

	Uni Lapland	ISB %	Finland ISB %	Europe ISB %	ISB +/-	Finland ISB +/-	Europe ISB +/-	% p	ISB	Finland ISB	Europe ISB
LIVING AVERAGE	76.1%	79.7%	79.8%	78.6%	-3.6%	-3.7%	-2.5%		56	12	17
LIVING OVERALL	88.7%	87.3%	89.2%	87.5%	1.4%	-0.5%	1.2%	0.17	21	7	9
SOCIAL											
Other friends	96.1%	88.6%	91.9%	91.6%	7.5%	4.2%	4.5%	0.00	1	1	1
Host culture	86.8%	85.5%	82.8%	84.0%	1.4%	4.0%	2.8%	0.51	36	5	9
Sport facilities	84.5%	80.7%	81.0%	79.6%	3.8%	3.5%	4.9%	0.01	22	6	10
Home friends	84.3%	84.6%	86.4%	85.6%	-0.3%	-2.2%	-1.3%	0.77	55	12	23
Social activities	77.8%	82.6%	80.3%	81.5%	-4.8%	-2.6%	-3.8%	1.00	65	11	21
Good contacts	76.5%	78.0%	73.9%	75.6%	-1.6%	2.6%	0.9%	0.88	66	6	15
Social facilities	67.0%	81.7%	79.4%	78.0%	-14.7%	-12.4%	-11.0%	0.01	116	14	30
Host friends	49.2%	72.3%	58.6%	61.7%	-23.1%	-9.4%	-12.5%	0.00	118	14	30

(I-graduate.com, 2017)

Feedback from meetings

- “Sources of information exist like internationalist [Email list for international students] and FaceBook but they don't reach international students” - Russian student
- “You feel to be an outsider even after three years” – Spanish student
- “A sense of WE and THEM” – Spanish student
- “Social activities needs to be quite different for MA and exchange students” – German lecturer
- “Finns are hesitant to use English language – Finnish Student
- “Integration into the society without language skills” – Finnish lecturer

The project

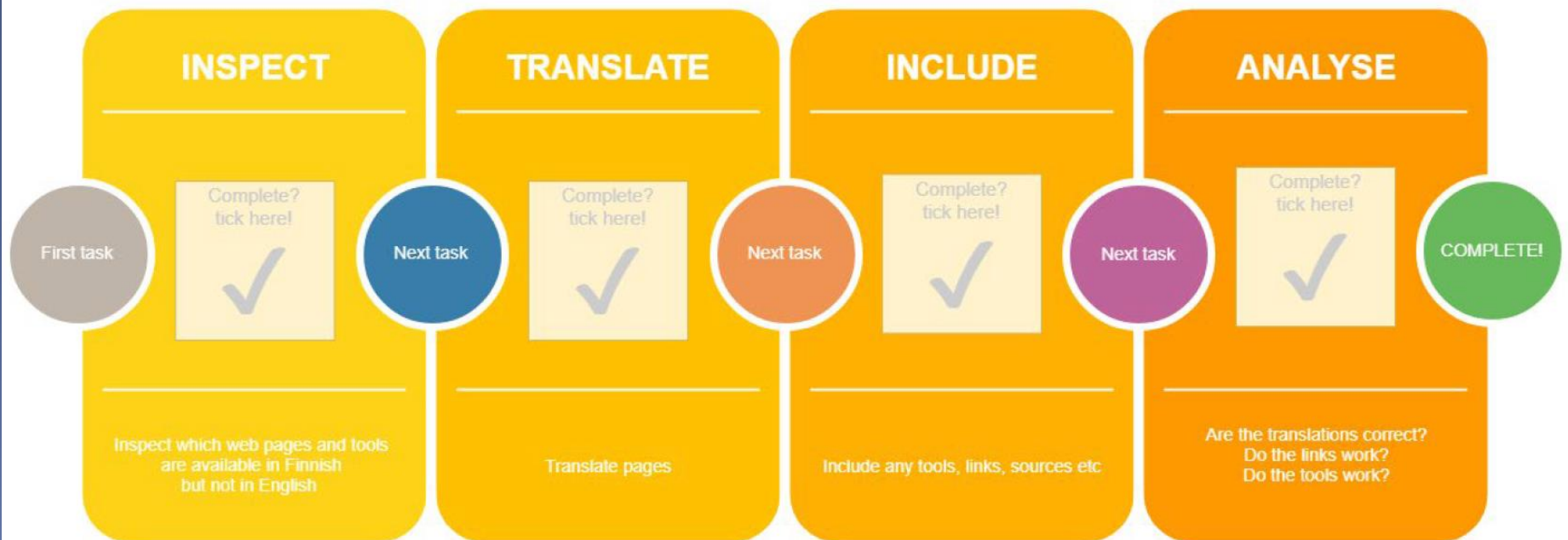
- ◉ A host of proposed steps to inspire integration and co-operation between students and sections of the university
- ◉ Clearly designated responsible persons
- ◉ Three sections: University of Lapland, LYY and Student associations

The steps - ULapland

Ensure same tools and information for students via main webpage

Responsible person(s)

- Coordinator of Applicant and student services
- Advisors, Internationalisation office



The steps - ULapland

Consistent translation of media

Responsible person(s)

- Coordinator of Applicant and student services
- Director/Advisors, Internationalisation office
- Interns, Internationalisation office



The steps - ULapland

Appoint career counsellor for English speakers

Responsible person(s)

- Director/Advisors, Internationalisation office

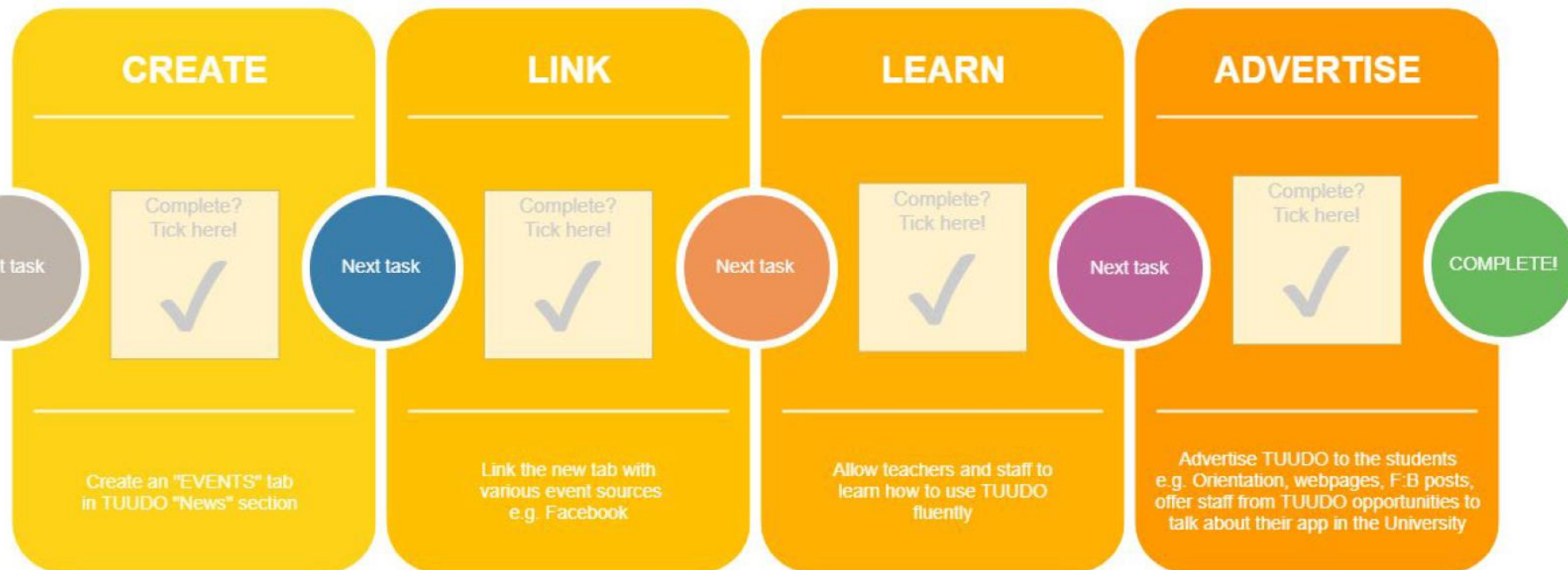


The steps - ULapland

Utilising TUUDO

Responsible person(s)

- Coordinator of Applicant and student services
- Director/Advisors, Internationalisation office

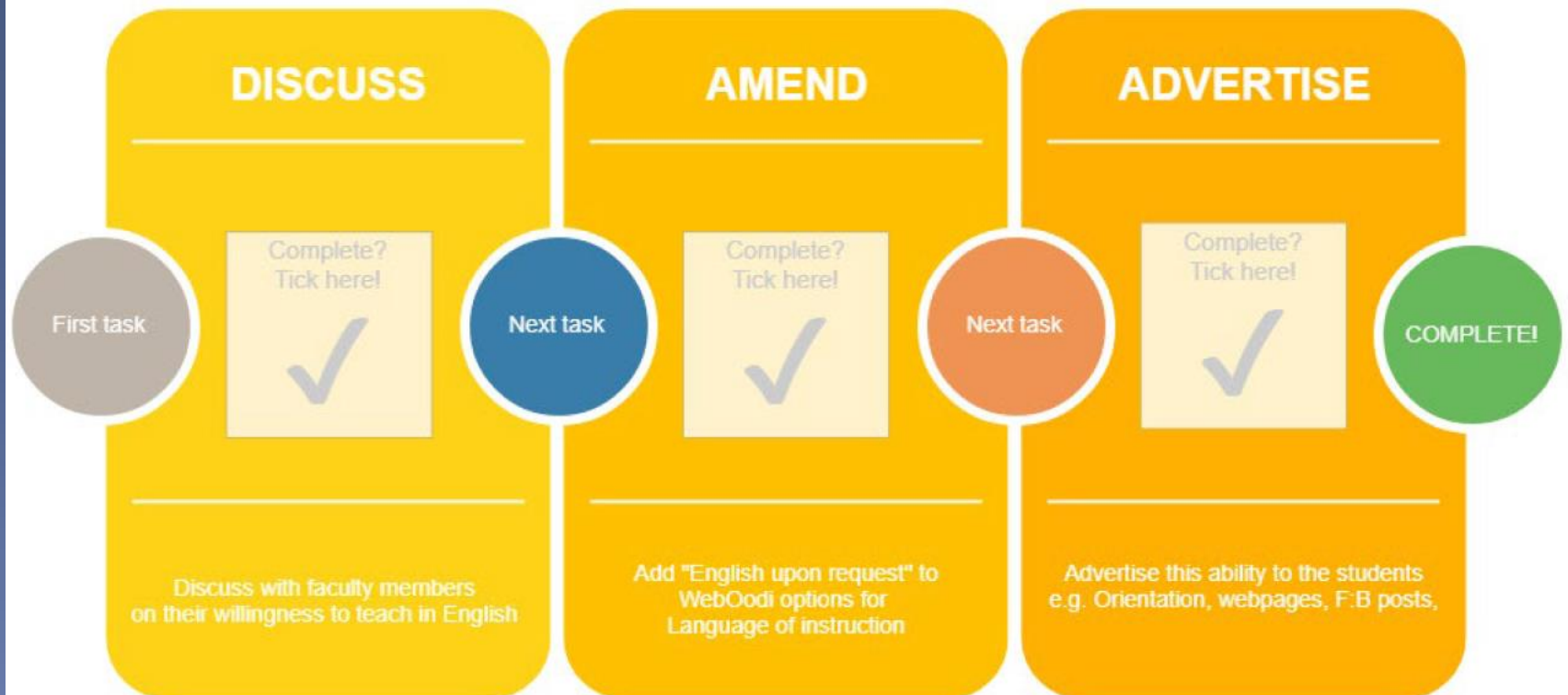


The steps - ULapland

Increase emphasis on ability to ask for courses in English

Responsible person(s)

- Director, Education Services
- Director/Advisors, Internationalisation office

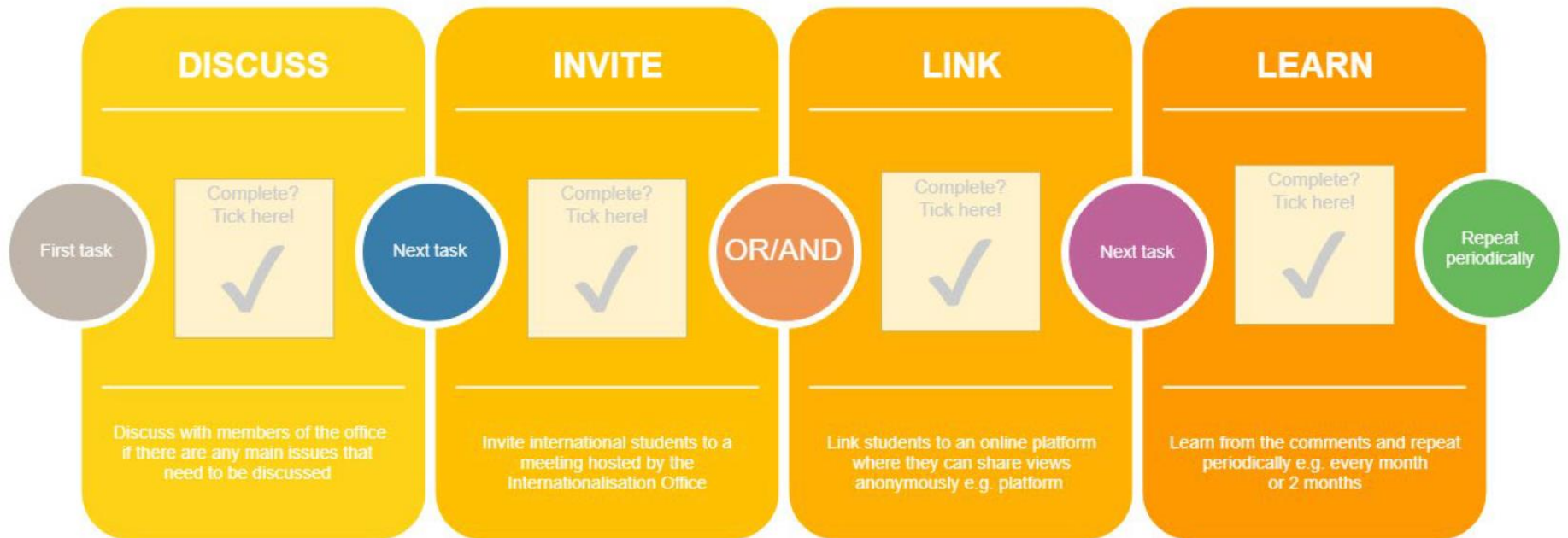


The steps - ULapland

Interaction with students

Responsible person(s)

- Director/Advisors, Internationalisation office

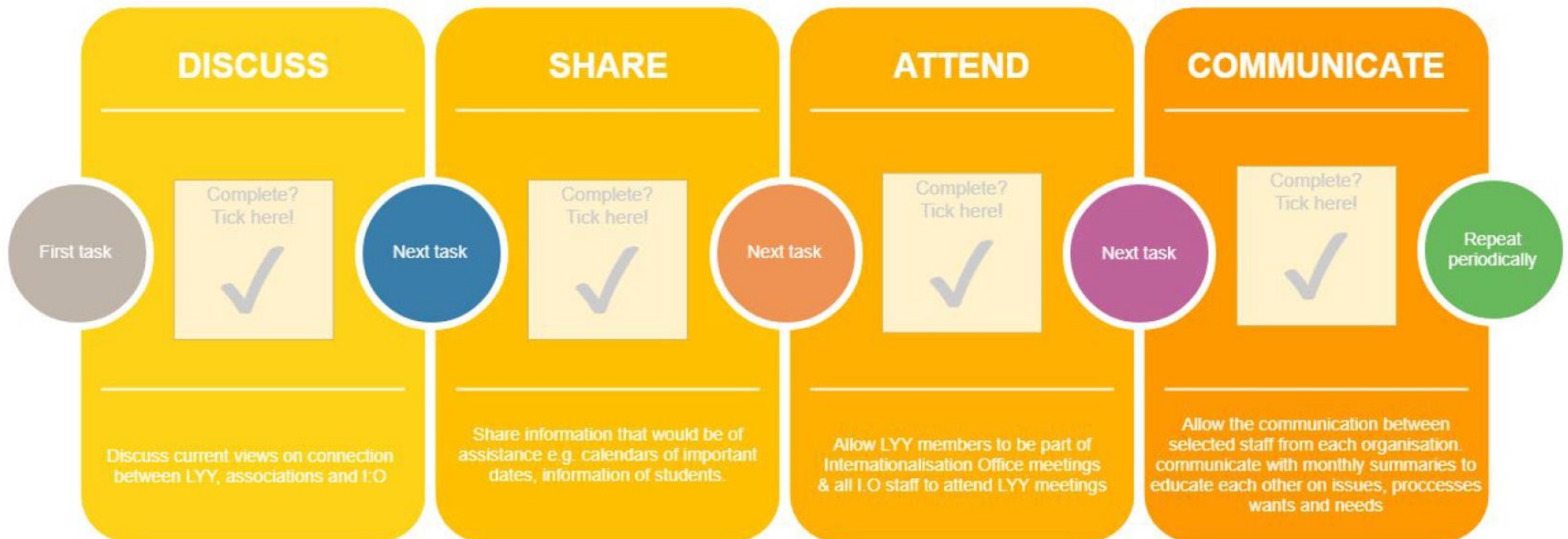


The steps - LYY

Greater communication with LYY and associations

Responsible person(s)

- Director/Advisors, Internationalisation office
- Chairperson of LYY

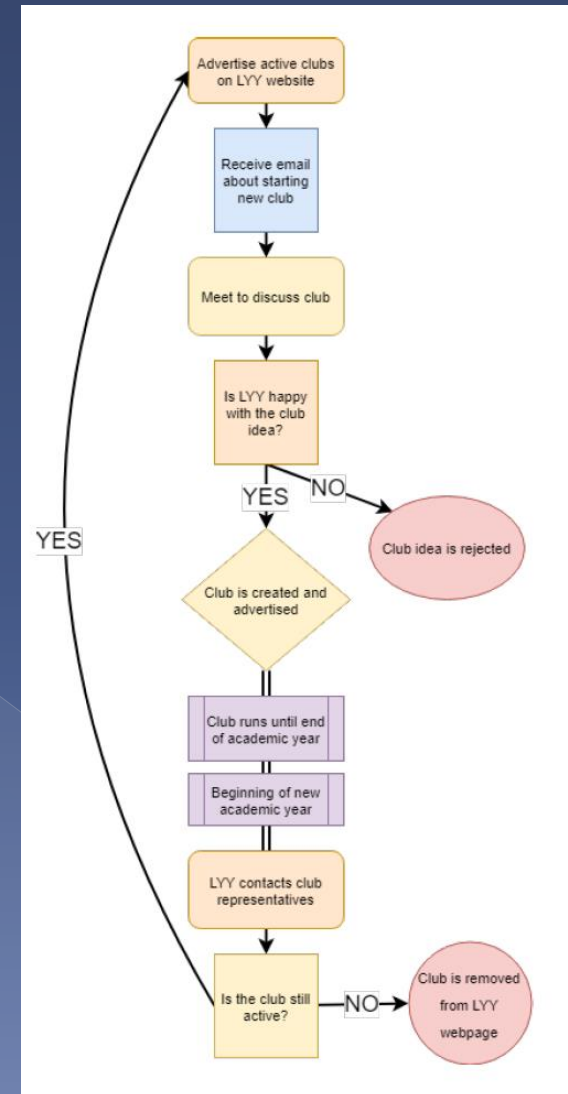


The steps - LYY

Implementation and advertisement of clubs

Responsible person(s)

- Chairperson of LYY
- General secretary (Pääsihteeri)
- Advocacy specialist (Edunvalvonta-asiantuntija)
- Non-governmental and communications expert (Järjestö- ja viestintäasiantuntija)
- Culture and international affairs (Kulttuuri ja kansainväliset asiat)
- Social policy, tutoring and culture (Sosiaalipolitiikka, tuutorointi ja kulttuuri)

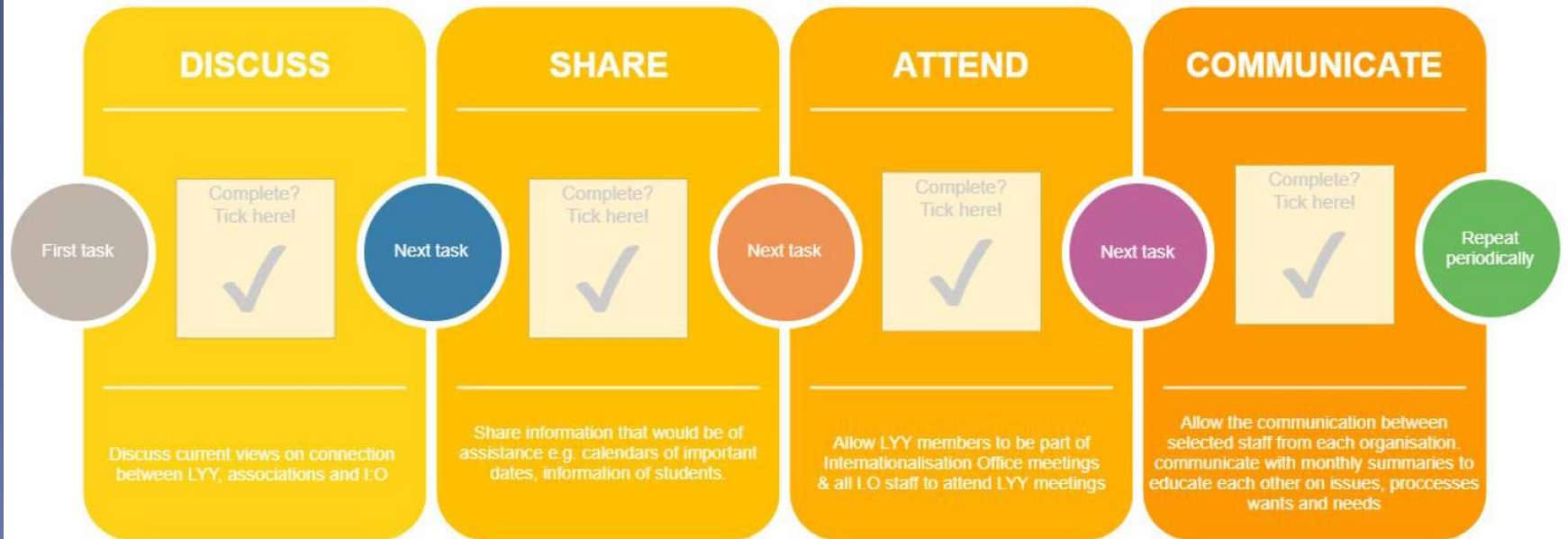


The steps - LYY

Greater connection with Internationalisation Office

Responsible person(s)

- Chairperson of LYY
- General secretary (Pääsihteeri)
- Advocacy specialist (Edunvalvonta-asiantuntija)
- Non-governmental and communications expert (Järjestö- ja viestintäasiantuntija)
- Culture and International affairs (Kulttuuri ja kansainväliset asiat)

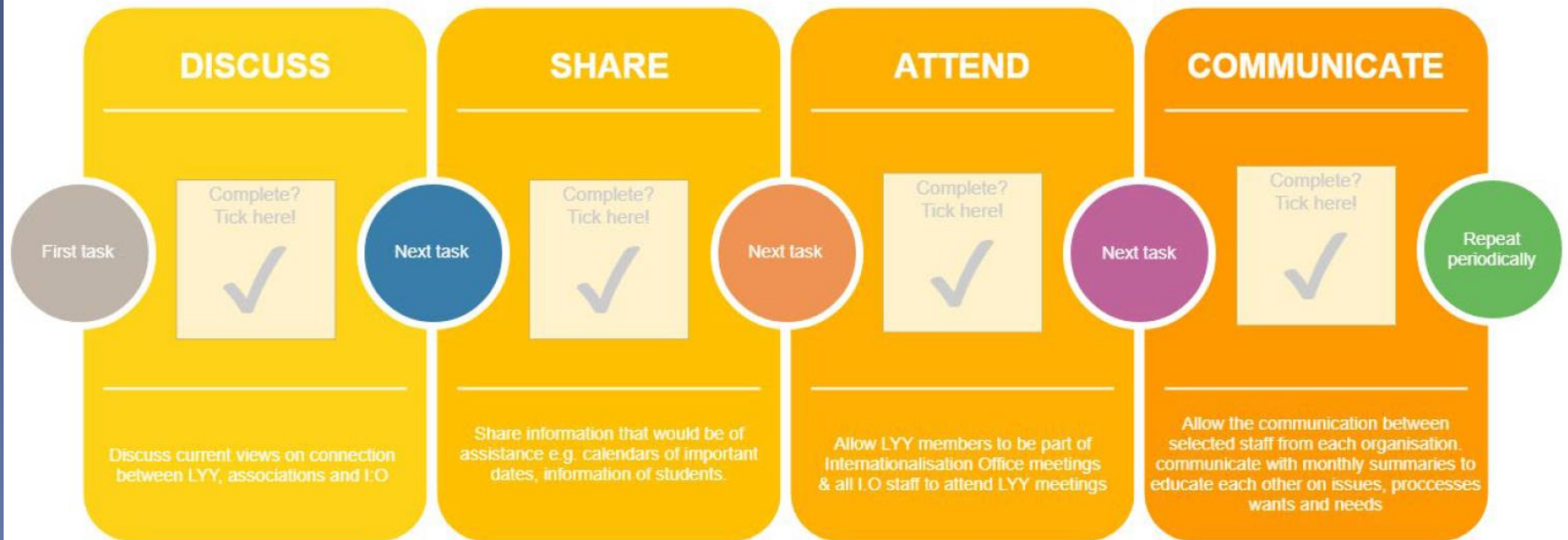


The steps – Student associations

Greater connection with Internationalisation Office

Responsible person(s)

- Chairperson of LYY
- General secretary (Pääsihteeri)
- Advocacy specialist (Edunvalvonta-asiantuntija)
- Non-governmental and communications expert (Järjestö- ja viestintäasiantuntija)
- Culture and International affairs (Kulttuuri ja kansainväliset asiat)

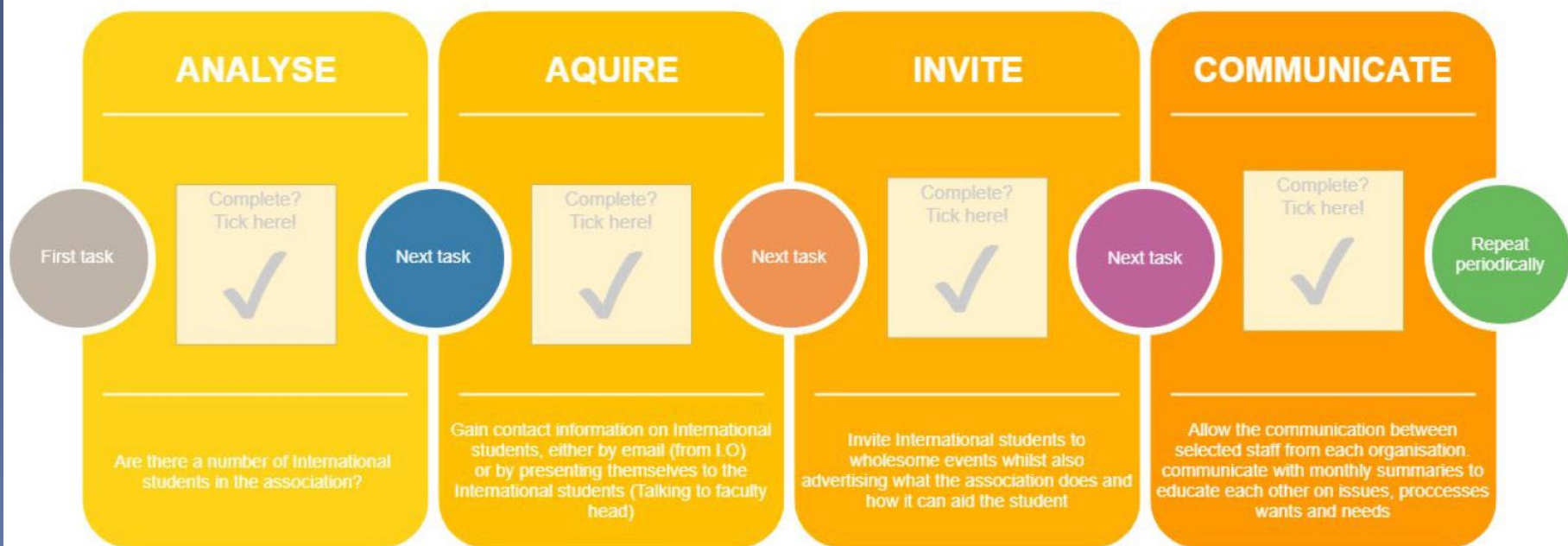


The steps – Student associations

Continuous movement to involve International students

Responsible person(s)

- President of respective association
- Vice president of respective association
- Secretary of respective association

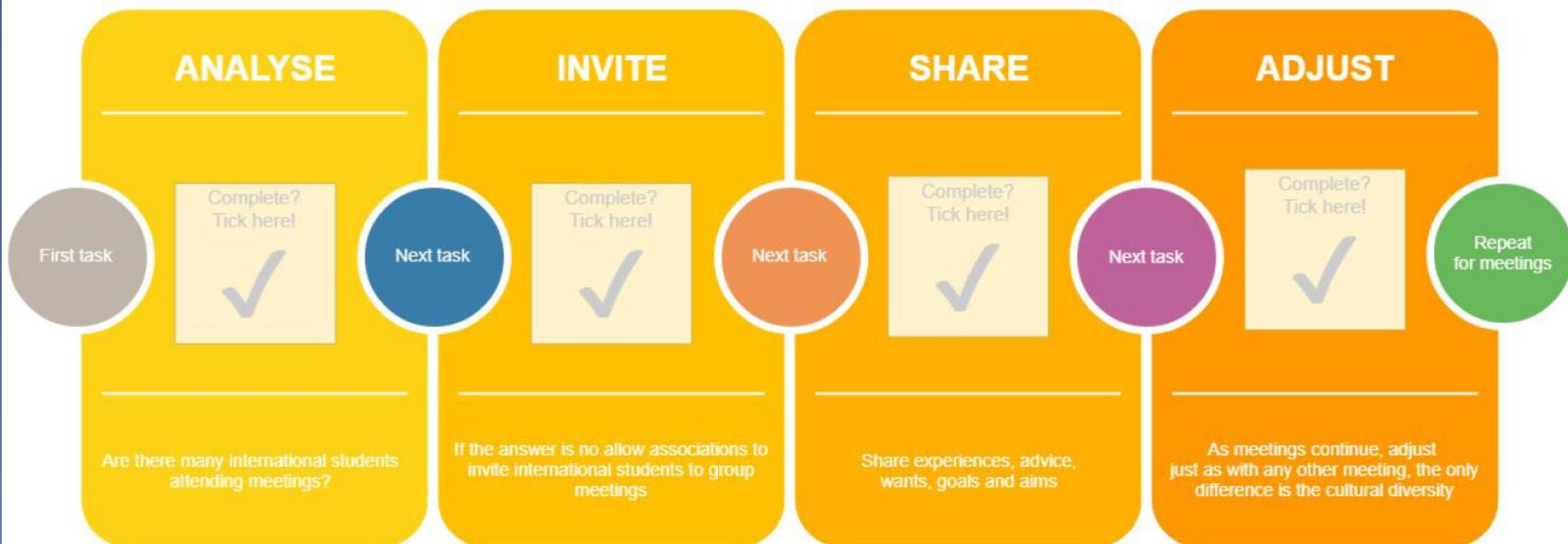


The steps – Student associations

International student presence

Responsible person(s)

- President of respective association
- Vice president of respective association
- Formed committee of international students



Response

- After speaking with stakeholders and expressing views
- Explored and analysed action steps
 - > Positive reaction
- Was because of thorough work and involvement of stakeholders



Social integration for int. students

- In LYY, we have had three main areas and points (for social integration), where we have mainly focused on lately
- Areas are following:
 - > International Section meetings
 - We have created "international section", where belongs representatives from our subject associations, people from Uni. Lapland's int. office, ESN Lapland representative and LYY's board member and advisor for educational and social affairs
 - There are monthly meetings where we plan our international, especially integration work and exchange information about what we are doing right now in international affairs
 - > International tutoring
 - LYY has organized "Finnish degree tutoring" in the University of Lapland since 2018
 - We also have co-operated with int. office on int. tutoring
 - This year we have had a special focus on getting and well-training tutors for our int. degree programs, as they need more "educational-orientated" tutoring than exchange students, at least based on our experiences
 - Also social integration has been a big theme in the tutoring
 - > Bi-lingual communication
 - As the student union, we have made our communication more and more bi-lingual
 - We also have encouraged our associations communicate bi-lingually
 - We see that communication and shared language is the key for a good social integration
- Our goal is to help international students to feel themselves more welcomed and feel that they are important part of our university-community. Our co-operation with the international office in this specific subject has been great and we think that we are on our way to succeed in better social integration in the Uni of Lapland.

The future!

- ⦿ Actions already taken
- ⦿ Plans for autumn (E.g. Implementation of tools to inspire closer connection between Finnish and international students)
- ⦿ Closer communication between sections of the university

Conclusion

- Should aspects as mentioned above remain untouched, with no change, then it is clear to see how The University of Lapland will suffer, culturally, educationally, financially and socially. However, already, without this document The University has created steps and processes to improve their position on internationalisation. The University serves as a testament for the want of the new and unexplored, a pioneer in the snow. This unique university, at the top the world is changing and with an open mind and heart for adventure, great success is sure to follow.

Thank you for
listening

Any questions?