

EU mobility scheme
for artists and cultural
professionals

i-Portunus

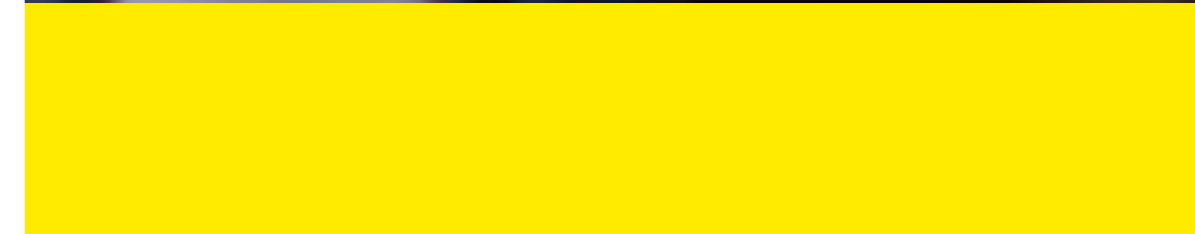


About

i-Portunus bases itself on the experiences obtained in the first phase and shifts its focus on other areas of international cultural cooperation, in order to get a thorough look at the various sectors and their different needs for mobility, defined by the Operational Study organized by *On the Move*.

An executive summary of the report can be read [here](#).

The full operational study can be read [here](#) and the annexes can be downloaded [here](#).



41 Countries

Albania
Armenia
Austria
Belgium
Bosnia and
Herzegovina
Bulgaria
Croatia
Cyprus
Czechia
Denmark
Estonia
Finland
France
Georgia
Germany
Greece

Hungary
Iceland
Ireland
Italy
Kosovo*
Latvia
Lithuania
Luxembourg
Malta
Moldova
Montenegro
Netherlands
North Macedonia
Norway
Poland
Portugal
Romania

Serbia
Slovakia
Slovenia
Spain
Sweden
Tunisia
Ukraine
United Kingdom

The UK participates in i-Portunus as long as it participates in the Creative Europe Programme.

** This designation is without prejudice to positions on status, and is in line with UNSCR 1244/1999 and the ICJ Opinion on the Kosovo declaration of independence.*

° Overseas countries and territories to which the provisions of part four of the Treaty on the Functioning of the European Union apply are Greenland, New Caledonia and Dependencies, French Polynesia, French Southern and Antarctic Territories, Wallis and Futuna Islands, Saint Pierre and Miquelon, Saint-Barthélemy, Aruba, Netherlands Antilles (Bonaire, Curaçao, Saba, Sint Eustatius, Sint Maarten), Anguilla, Cayman Islands, Falkland Islands, South Georgia and the South Sandwich Islands, Montserrat, Pitcairn, Saint Helena and Dependencies, British Antarctic Territory, British Indian Ocean Territory, Turks and Caicos Islands, British Virgin Islands and Bermuda.

2019. Phase 1

Performing Arts and the Visual Arts

2.518 valid individual and group applications
corresponding to 3195 individuals.

337 grants for a total amount
of 620.933€ including disability support



2020 – 2021. Phase 2

5 open calls to support the international mobility of artists, creators and cultural professionals in the sectors of:

Music

Literature translation

Architecture

Cultural heritage



Dates of calls

These 5 open calls will be open for two months and launched on three different dates being:

9 December 2020 (for music and literary translation),

15 January 2021 (architecture),

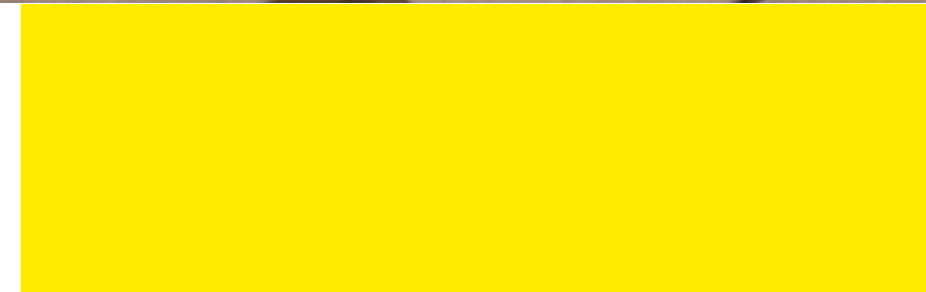
15 February 2021 (music and cultural heritage).



Budget

i-Portunus foresees a total budget of 500.000,00 EUR, spread over the upcoming five calls.

Financial support will exist out of a fixed amount per applicant for transportation and a per diem, depending on the destination country.



First calls

i-Portunus for literary translation

Call for applications:

9 December 2020

Submission Deadline:

28 February 2021

(18:00 CET)

i-Portunus for music

Call for applications:

9 December 2020

Submission Deadline:

28 February 2021

(18:00 CET)



i-Portunus for Literary Translation

Timing

Event	Date
Call for applications:	9 December 2020
Submission Deadline:	28 February 2021 (18:00 CET)
Notification of Results:	2 April 2021
Earliest date of departure:	1 June 2021
Latest date of return:	30 November 2021

[Details](#)



i-Portunus for Music

Timing

Event	Date
Call for applications:	9 December 2020
Submission Deadline:	28 February 2021 (18:00 CET)
Notification of Results:	2 April 2021 Earliest
Earliest date of departure:	1 June 2021
Latest date of return:	30 November 2021

[Details](#)



i-Portunus for Architecture

Timing

Event	Date
Call for applications:	15 January 2021
Submission Deadline:	14 March 2021 (18:00 CET)
Notification of Results:	16 April 2021
Earliest date of departure:	16 June 2021
Latest date of return:	30 November 2021

[Details](#)



Mobility

When?

mobility between 1 June and 30 November 2021, conditions permitting.

Duration

between 7 and 60 days

Maximum grant per person

3.000,00 EUR.





my i-Portunus

Log in

[Forgotten password?](#)

Register

How to apply?

<https://my.i-portunus.eu>

How to apply?

Simple and easy:

- Application form
- Budget
- Reporting





info@i-portunus.eu