

Aalto and Shanghai Design & Innovation College

3 June 2020

Petri Suomala, Vice President
Education

A”

Aalto-yliopisto
Aalto-universitetet
Aalto University

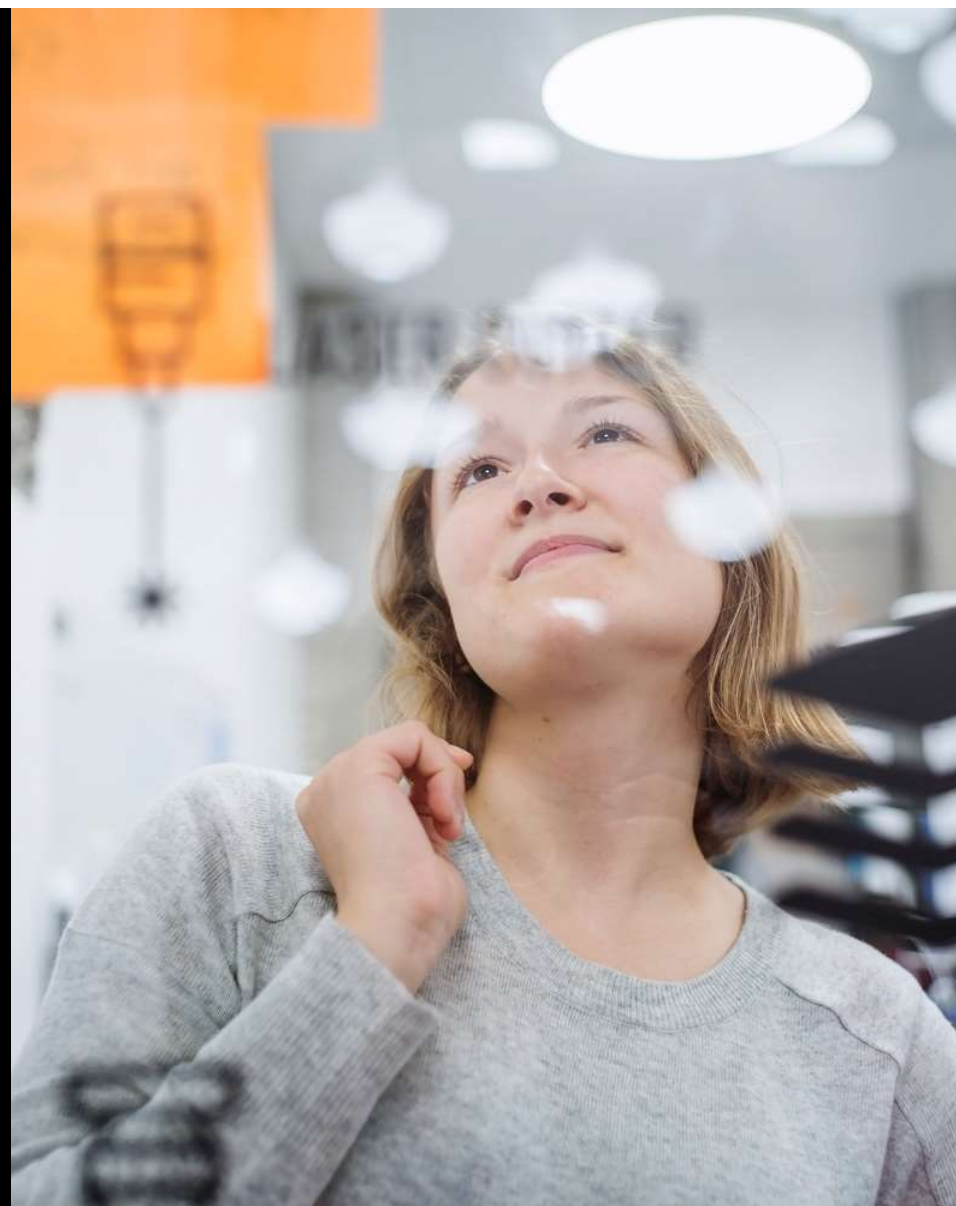


Aalto University

Shaping the future

A”

Aalto-yliopisto
Aalto-universitetet
Aalto University



Six dynamic schools

School of Arts, Design and Architecture

architecture; art; design; media; film, television and scenography

School of Business

accounting; economics; finance; management studies; marketing; information and service management

School of Chemical Engineering

bioproducts and biosystems; chemistry and materials science; chemical and metallurgical engineering

School of Electrical Engineering

communications and networking; electronics and nanoengineering; electrical engineering and automation; signal processing and acoustics

School of Engineering

built environment; civil engineering; mechanical engineering

School of Science

applied physics; computer science; industrial engineering and management; mathematics and systems analysis; neuroscience and biomedical engineering



Long-term

SHAPING A SUSTAINABLE FUTURE

PURPOSE



Research

Breakthroughs in and across science, art, technology and business



Education

Sparking the game changers of tomorrow



Impact

Innovative solutions to tackle global grand challenges



Focus of development



Driving excellence

World-class clusters of excellence, bringing talent together



Future-led learning

Greater societal responsibility in degree education and continuous learning with elevated student experience



Inspiring ecosystem

Building an internationally prominent ecosystem



Solutions for sustainability

Using our strengths to address global challenges



Radical creativity

Globally leading community for new thinking



Entrepreneurial mindset

Fostering a strong entrepreneurial culture



Enabling our success

Investing in our community & people, infrastructures & campus, and services

VALUES AND WAYS OF WORKING



Responsibility

We act sustainably for the wellbeing of all



Courage

Taking on challenges with agility, creativity and passion, we aim high.



Collaboration

A diverse and empowered community that shines by working together



Impact

**We renew society with research-based knowledge, creativity and entrepreneurial mindset.
We generate innovative solutions to tackle global grand challenges.**

Focus of development: Inspiring ecosystem

As a community of faculty, staff, students, alumni and partners, we build our innovation, creative and entrepreneurial ecosystem as a prominent node in global networks.

Actions: Cultivating an environment of innovation, developing global and local networks, building a sustainable and thriving campus

Aalto – Tongji partnership - since 2010



2010 - Strategic partnership signed

based on long-term cooperation between the parties, particularly in the field of design

establishment of Design Factory at Tongji, DD program running

high level engagement – presidents' annual meetings



Active seeking for forms of cooperation in education, research, impact

professor visits, student visits, Finnish ministerial visits to Tongji Design Factory,

establishment of Sino Finnish Centre



2015 - decision to apply for a Shanghai International College of Design and Innovation

under 'Chinese - Foreign Cooperative School Running'



2016 Application approved

2017 the first students enrolled

2018 the first students to Aalto

Shanghai D&I overview

Aalto provides 1/3 of education for three Master's degrees

- student recruitment by Tongji
- MA-programmes last 2 years
 - Aalto teaches three courses in Shanghai
 - Tongji students study at Aalto one or two semesters
 - Rest of the courses taught by Tongji in Shanghai (recognized by Aalto)
- Aalto education is provided by School of Arts, Design and Architecture (ARTS)
- MA degrees from Aalto and Tongji (provided that two thesis completed)
- Income generating – commissioned education

Tongji University

School of Design & Innovation

**Shanghai International Institute
of Design and Innovation**

Aalto University

School of ARTS/ School of Engineering

**Department of Design/ Design Factory/
Aaltonaut**

Structure (2/3 by Tongji, 1/3 by Aalto)

- Master program in International Design and Business Management (IDBM)
 - Master program in Creative Sustainability
 - Master in Collaborative and Industrial Design
- Cooperation courses in the framework of Aaltonaut at Bachelor level

In the background

Internal expertise for

- Study administration and student services
- Education planning
- Legal services
- Financial services
- Partnership management and cultural competence

External expertise for

- Establishing operations in China
- Taxation

Requires from the organization

A long-term
commitment
from the whole
university

Committed
academic
leadership

Teachers who
are willing to
teach overseas

Active
partnership
management

Throughout the
organization: flexibility
and willingness to look
for solutions
(but not at any cost)

Experiences from running the programs

Substantial administrative on-going effort form learning, financial, international and legal services

Chinese partner expects strong personal level faculty commitment

Slow and laborious practicalities due to language barrier, differences in decision-making culture, remote collaboration

Partner country's political agenda can pose a challenge for faculty recruitment and university reputation.

Benefits from the partnership

Recognized Aalto presence in China

- Aalto' reputation as active actor in Transnational Education in China

A solid position in international network/partnership

Trust and respect

- Best possible risk management in China.

Significant **organizational learning**, competence development for faculty and staff

Internationalization of Aalto: faculty, staff and students.

Access to desired markets - active presence in Shanghai's development efforts towards world class in design and innovation

Opportunity to practice **education export** in a way that fits in our normal activities

- Broadening Aalto's financial base: revenue generation.